

A.3

Will the changes you want to make to the outside of your house be made using building materials that look similar to the materials already used on the outside of your house?

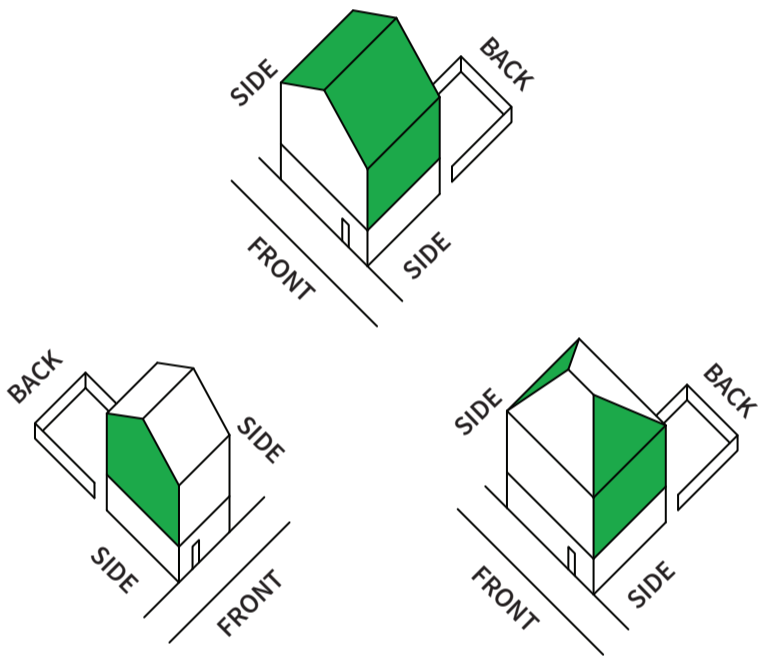
No

The changes you want to make aren't allowed as permitted development.

Consider changing your design, or applying for planning permission.

Yes

Take a look at the pictures below:



No

The changes you want to make are allowed under A.3, but there are other questions you need to answer before starting work.

Please check A.1, A.2 and A.4.

Yes

Do the changes you want to make include a new window (or more than one window) within the locations shown in green?

Will these windows be obscure-glazed?

Note: 'Obscure-glazed' means windows which don't let people see in or out clearly, but still let light in. They might use frosted, textured or sandblasted glass.

No

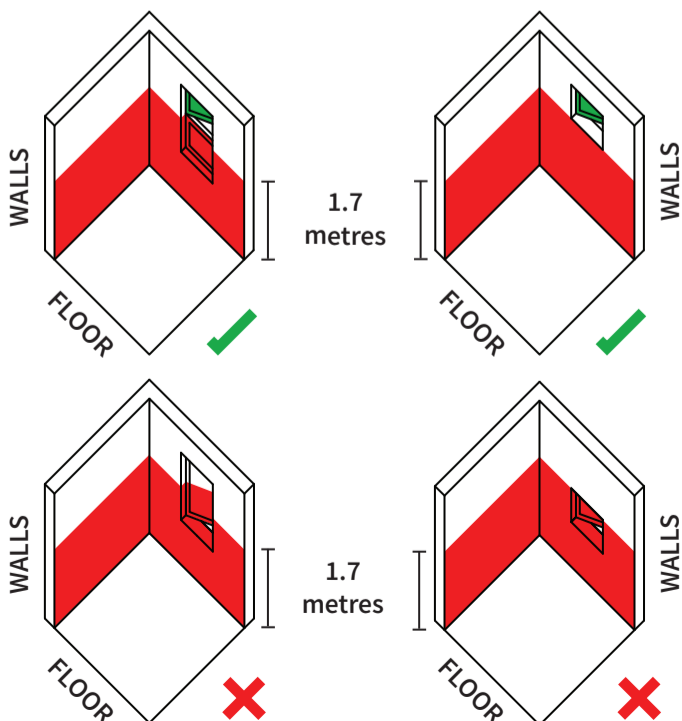
Yes

Will any of these windows open?

Yes

No

Take a look at the pictures below:



Will all the windows you want to be able to open be located above the areas shown in red?

Note: Openable windows must be more than 1.7m above the floor of the room the window is in.

Yes

No